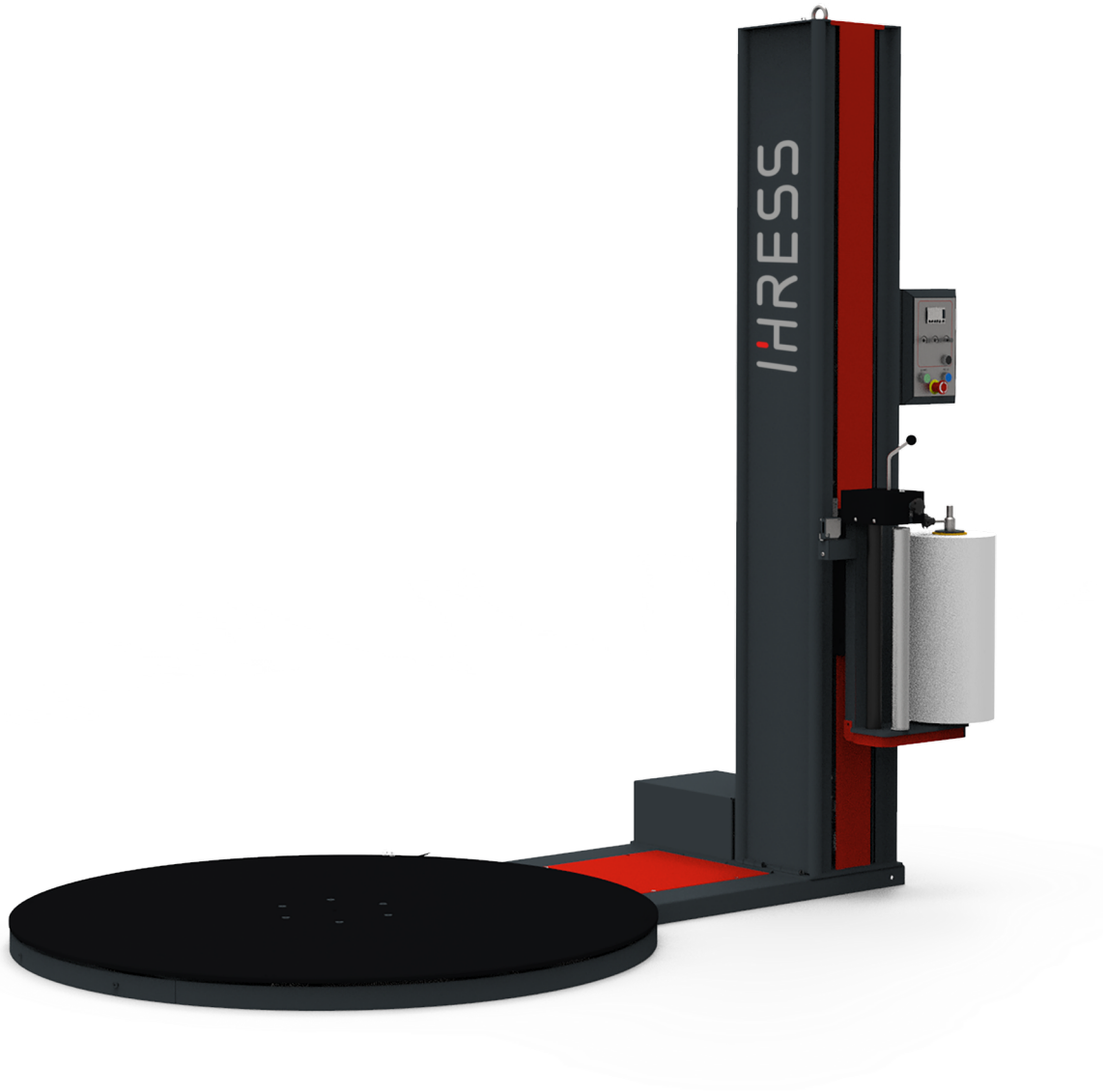


IHRESS

PREMIUM PACKAGING MACHINERY



i100

Semi-automatic turntable wrapping machine



Pol. Ind. La Serra
C. Camí de la caseta, 3-A | 08185 Lliçà de Vall (BARCELONA)
+34 936 555 600 | ihress.com | info@ihress.com

TECHNICAL CHARACTERISTICS OF THE STANDARD MACHINE

- iHRESS® profile
- Folding column.
- Lateral motorised reel holder trolley with speed variator.
- Adjustable mechanical brake with anti-jamming device.
- Photocell for automatic load height detection.
- Platform dimensions: Ø1.500 mm and 10 mm thick.
- Progressive start and stop with position stop and SCHNEIDER variable speed drive.
- 4 wrapping cycles: Single / Double / Double-plus / Complete.
- Wrapping cycle counter.
- Independently adjustable top & bottom reinforcement wraps.
- Controlled by SIEMENS with LCD display.
- Reinforcement of any part of the load.
- Ergonomic control panel.
- Variable production depending on the operator and the characteristics of the load.



PLC



Dashboard

FMA Trolley



Adjustable mechanical brake with anti-skid system (standard)

Pre-stretch Carriage



Pre-stretch carriage with a standard stretch ratio of 250% (other ratios between 100 and 400% available on request)

SPECIAL OPTIONS

Scale with display



Reinforced chassis with integrated weighing scale, with 6 weight cells and display

Platforms



Other diameters:
Ø2.000mm, Ø2.400mm,
Ø3.000mm, ...
Loads up to 3.000 Kg.

Special environments



Explosives: ATEX
Temperatures below 0°C
(down to -30°C)

STAINLESS STEEL 304



Machine made of stainless steel 304 for corrosive environments.

| Technical features | Standard |
|------------------------------------|------------------------|
| Maximum height | Up to 2,000 mm |
| Turntable diameter | Ø 1.500 mm |
| Maximum pallet dimensions up to | 1.200 x 1.100 mm |
| Maximum weight | 2.000 Kg. |
| Electrical power | 220 - 240 V 50 / 60 Hz |
| Installed power | 1 Kw |
| Film carriage | FMA |
| Stop in position | Standard |
| Start / Stop frequency inverter | Standard |
| Load height detection by photocell | Standard |
| PLC with display | Standard |

OPTIONS AND ACCESSORIES

1. Turntable accessing ramp
2. Embedding frame
3. Scale with display
4. Direct film brake
5. Mechanical film brake (standard)
6. Electromagnetic brake
7. Powered pre-stretch film 250%
8. Twin film holder
9. Powered top platen
10. Powered top platen for flat loads



SPECIAL CUSTOMIZATION ON DEMAND

- Ultrasonic detector for black loads
- Manufacture in INOX 304
- ATEX explosive environments
- Environments down to -30°C
- Special heights
- Special diameters
- Loading entrance ramps and lifts with stackers
- Different pre-stretch ratios 150%, 200%, 300% or 400%.
- Film reel trolleys for film height 750 mm or 1.000 mm
- PLC extended up to 10 programmes



STANDARD MACHINE DIMENSIONS

