

IHRESS

PREMIUM PACKAGING MACHINERY



i550

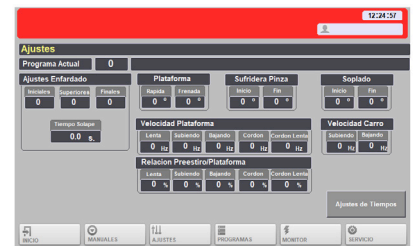
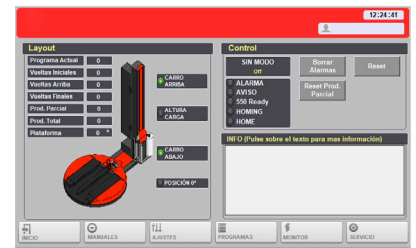
***Automatic turntable pallet wrapper with 3ALL system
Manual pallet loading***



Pol. Ind. La Serra
C. Camí de la caseta, 3-A | 08185 Lliçà de Vall (BARCELONA)
+34 936 555 600 | ihress.com | info@ihress.com

STANDARD MACHINE TECHNICAL CHARACTERISTICS

- Powered film carriage with variable speed, placed sidewise.
- Powered pre-stretch 250% with roping system
- 3ALL system: Clamp, cut and weld film
- Initial tail film blower
- Automatic load height detection by photocell.
- Soft start/stop by SCHNEIDER frequency inverter with return to start position.
- Wrapping cycles counter.
- Independently adjustable top & bottom reinforcement wraps.
- SIEMENS PLC control and colour LCD touch screen.
- Reinforcement wraps at any point in the cycle.
- Ergonomically designed panel control.
- Production up to 15 pallets/hour
(Variable production depending on the operator and the characteristics of the load.)
- 10 customizable wrapping programs by the user:
Initial wraps, upper and final, overwrap time, etc.



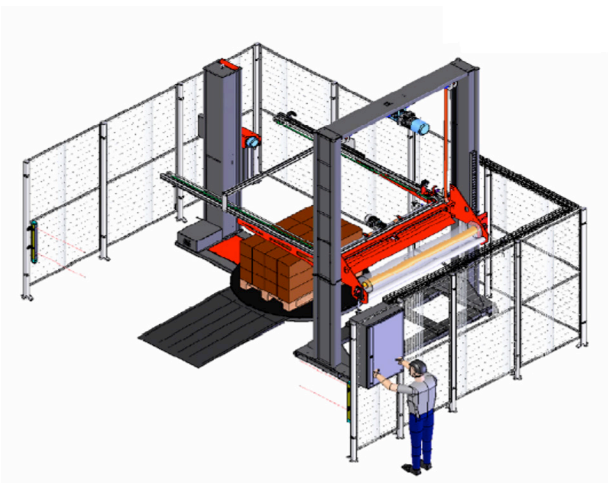
Displays showing the wrapping cycles configuration and information about the machine status.



| Technical features | Standard |
|--|--|
| Maximum height | 2.400 mm (other heights consult) |
| Turntable diameter | Ø 2.000 mm |
| Maximum pallet dimensions | to 1.200 x 1.100 mm |
| Maximum weight | 2.000 Kg. |
| Electrical power | 220 - 240 V 50 / 60 Hz |
| Installed power | 1 Kw |
| Air pressure | 6 bar |
| Film carriage | Motorised pre-stretch 300% with cord kit |
| Stop in position | Standard |
| Progressive start/stop with frequency inverter | Standard |
| Load height detection by photocell | Standard |
| PLC Siemens with touchscreen | Standard |

OPTIONS AND ACCESSORIES

1. Turntable accessing ramp
2. Embedding frame.
3. Scale with display
4. Powered top platen
5. Top sheet dispenser TDM1800



SPECIAL CUSTOMIZATION ON DEMAND

- Ultrasonic detector for black loads
- Stainless steel 304
- ATEX explosive environments
- Environments up to -30°C
- Special heights
- Special platforms
- Ramps and hoists for cargo loading with stackers
- Different pre-stretch ratio
150%, 200%, 300% or 400%



Perimeter security fencing (option)

STANDARD MACHINE LAYOUT

