

# IHRESS

PREMIUM PACKAGING MACHINERY



## i600TP

*Semiautomatic turntable wrapper*



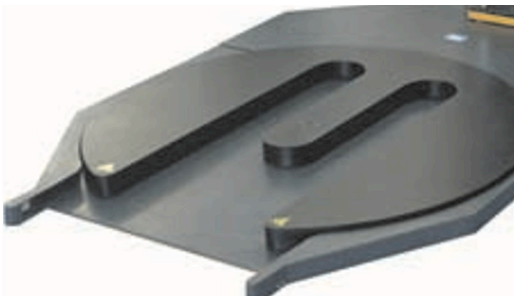
Pol. Ind. La Serra  
C. Camí de la caseta, 3-A | 08185 Lliçà de Vall (BARCELONA)  
+34 936 555 600 | [ihress.com](http://ihress.com) | [info@ihress.com](mailto:info@ihress.com)

**STANDARD MACHINE TECHNICAL FEATURES**

- Folding column
- Powered film carriage with variable speed, placed sidewise.
- Adjustable mechanical film brake with foot trapping detector.
- Automatic load height detection by photocell.
- Turntable dimensions : Ø1.500 mm.
- Open turntable to load the pallet directly with a forklift
- Soft start/stop by SCHNEIDER frequency inverter with return to start position.
- 4 wrapping programs: Single / Cross-wrap/ Cross-plus / Full.
- Wrapping cycles counter.
- Independently adjustable top & bottom reinforcement wraps.
- PLC controlled, with display control panel.
- Independent ascent and descend carriage speed for film saving.
- Reinforcement wraps at any point in the cycle.
- Variable production depending on the operator and the characteristics of the load.

**MODELS TO CHOOSE FROM**

**i600TP-F Model**



Front loading

**i600 TP-L Model**



Side loading

**FMA carriage**



Adjustable mechanical film brake with foot trapping safety

**PEM carriage**



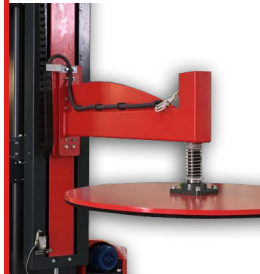
Pre-stretch carriage with a standard stretch ratio of 250% (other ratios between 100 and 400% available on request)

**Special environments**



Explosives: ATEX  
Temperatures below 0°C

**Powered top platen**



Machine with powered top platen included for light or unstable loads

Technical characteristics	Standard	Optional
Useful baling height	2.400 mm	2.800 mm and specials
Platform diameter	Ø 1.500 mm	Consult us
Maximum pallet size	to 1.200 x 800 mm	Consult us
Maximum weight	1.000 Kg.	Consult us
Supply voltage	220 - 240 V 50 / 60 Hz	220 - 240 V 50 / 60 Hz
Installed power	1 Kw	1 Kw
Reel trolley	FMA	PEM
Stopped in position	Standard	Standard
Soft start and soft stop with variable speed drive	Standard	Standard
Load detection photocell	Standard	Standard
PLC with display	Standard	Standard

### OPTIONS AND ACCESSORIES

1. Direct film brake
2. Mechanical film brake (standard)
3. Electromagnetic brake
4. Powered pre-stretch film 250%
5. Twin film holder
6. Powered top platen

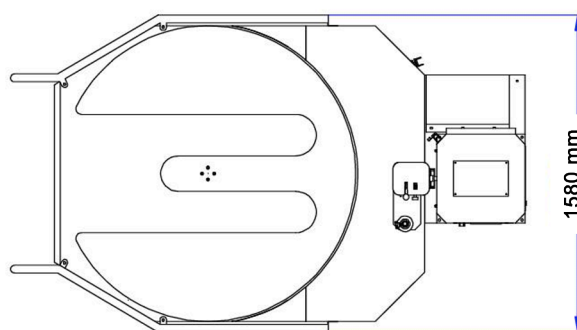
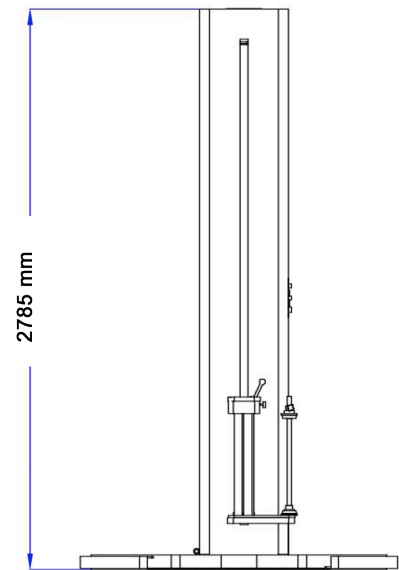
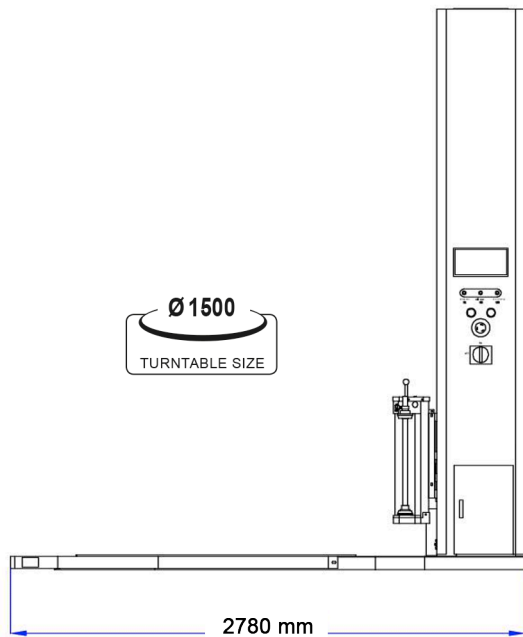
### SPECIAL CUSTOMIZATION ON DEMAND

- Ultrasonic detector for black loads
- Stainless steel 304
- ATEX explosive environments
- Special heights
- Special platforms
- Different pre-stretch ratios  
150%, 200%, 300% or 400%
- Carriages for 750 mm or 1.000 mm height film
- PLC extended up to 10 programs



Convenient loading directly with pallet truck

**STANDARD MACHINE LAYOUT**



**STANDARD MACHINE LAYOUT (side entry for pallet wrapping machine)**

