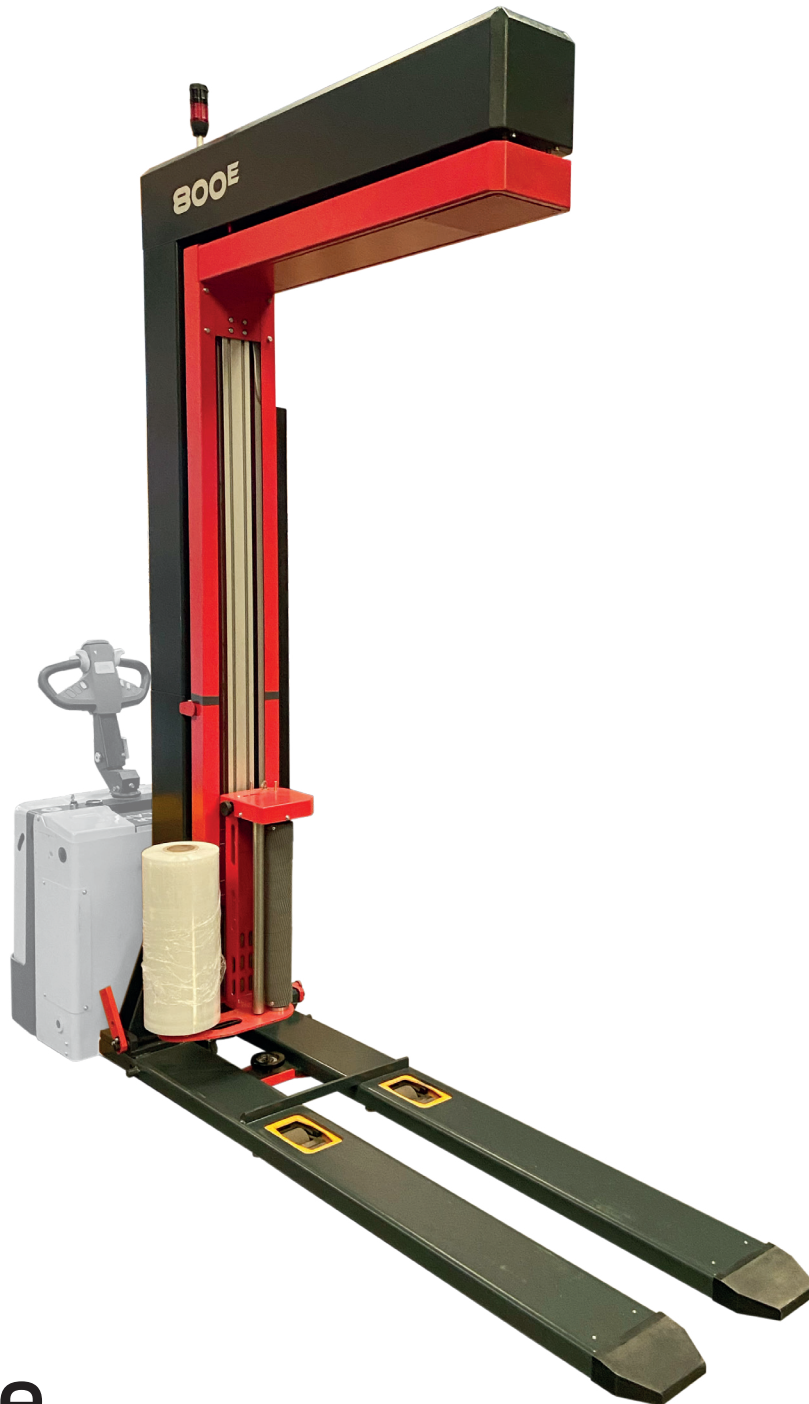


# IHRESS

PREMIUM PACKAGING MACHINERY



## i800e

***Semi-automatic mobile wrapping machine***

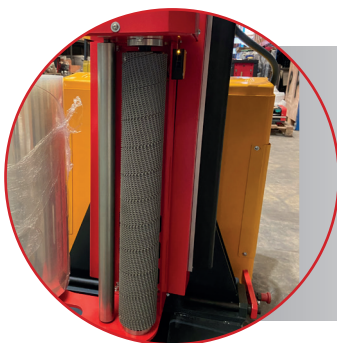


Pol. Ind. La Serra  
C. Camí de la caseta, 3-A | 08185 Lliçà de Vall (BARCELONA)  
+34 936 555 600 | [ihress.com](http://ihress.com) | [info@ihress.com](mailto:info@ihress.com)

### TECHNICAL CHARACTERISTICS OF THE STANDARD MACHINE

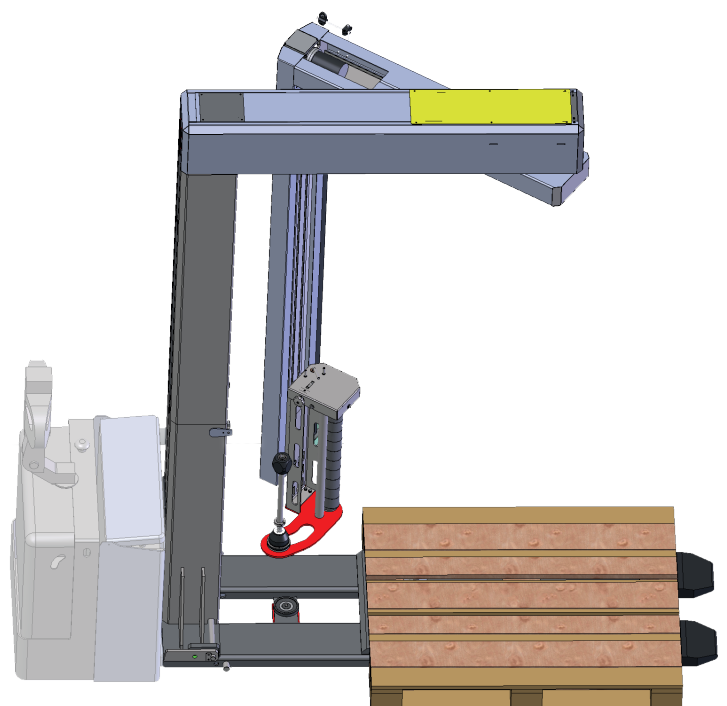
- Battery capacity: depends on the load of the electric trolley.
- Motorised reel trolley with variable speed drive.
- Photocell for automatic load height detection.
- Adjustable mechanical brake.
- Progressive start and stop with position stop and speed variator.
- 4 wrapping cycles: Single / Double / Double-plus / Complete.
- Wrapping cycle counter.
- Top & bottom independently adjustable booster wraps.
- START/STOP light signal.
- Controlled by SIEMENS PLC with LCD touch screen.
- Contact safety system: stops the wrapping arm in case of contact with an obstacle.
- Yo-yo system, to hold the loaded pallet.

**Touch screen control panel**



Film Carriage

Photocell impact detector.



| Technical Characteristics                            | Standard                    |
|--|-----------------------------|
| Useful wrapping height                               | 1.900 mm *                  |
| Maximum pallet dimension                             | To 1.200 x 1.000 mm         |
| Power supply voltage                                 | 24 V DC                     |
| Film carriage  | Adjustable mechanical brake |
| Maximum weight                                       | According forklift          |
| Stop in position                                     | Standard                    |
| Progressive start and stop with variable speed drive | Standard                    |
| Load detection photocell                             | Standard                    |
| PLC and touch screen                                 | Standard                    |

\*Consult for other heights and customised configurations



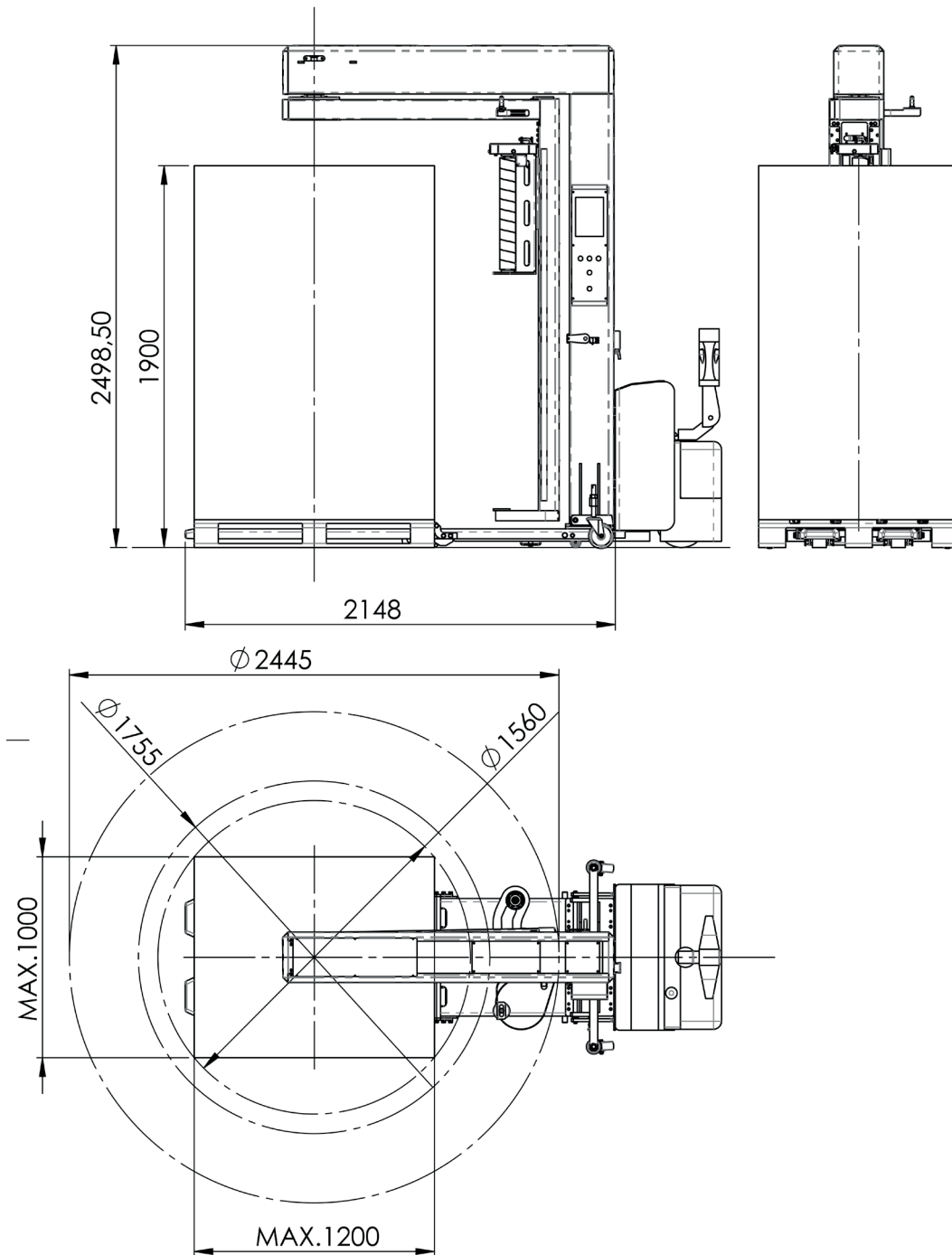
Detail of the adapted base



Attachments to the pallet truck



**STANDARD MACHINE LAYOUT**



### OPTIONAL: Electric pallet truck TOYOTA LWE160

#### Specifications

|                                  |                 |
|----------------------------------|-----------------|
| Drive unit                       | Electric        |
| Lifting capacity                 | 1600 Kg.        |
| Wheelbase                        | 1317 mm.        |
| Trolley weight including battery | 524 Kg.         |
| Lift                             | 120 mm.         |
| Height, forks lowered            | 85 mm.          |
| Overall length                   | 1688 mm.        |
| Overall width                    | 726 mm.         |
| Turning radius                   | 1477 mm.        |
| Speed with/without load          | 6.0/6.0 km/h.   |
| Travel brake                     | Electromagnetic |
| Battery weight                   | 214 Kg.         |
| Battery voltage/rated capacity   | 24 V. / 225 Ah. |

